



# Yackandandah Kindergarten

c- Yackandandah Primary School  
39 High Street Yackandandah 3749

Ph: 0427 439 337 or 02 6027 1560  
Email: [yackandandah.kin@kindergarten.vic.gov.au](mailto:yackandandah.kin@kindergarten.vic.gov.au)

## Information Booklet 2015

Welcome to Yackandandah Kindergarten.  
We hope it will be an enjoyable year for you and your child.

The following Information Booklet, in conjunction with the Policy Document prepared by the Management Committee, is designed to help you understand the service offered at Kindergarten.

Please read this information and keep it in a handy place for referral.

# Yackandandah Kindergarten

## TABLE OF CONTENTS

KINDERGARTEN PHILOSOPHY / VALUES .....	2
MANAGEMENT STRUCTURE .....	3
Parents & Friends, Management & Families Working Together .....	3
SERVICE INFORMATION	
License to operate children's service .....	4
PROGRAM INFORMATION	
Quality Accreditation .....	4
Staff Qualifications & 2015 Staff Profile .....	5
ENROLMENT / INDUCTION	
Term Dates .....	6
Session Times .....	6
Enrolment Interviews – November 2014 .....	7
Fees and Funding .....	7
Registered Child Care Rebate .....	7
Health Care Card Holders Fee Subsidy .....	7
Medical Conditions & Action Plans .....	8
Individual Anaphylaxis Management Plan .....	8
Medication .....	8
DAILY PROCEDURES AT KINDER	
Daily Arrival Time .....	9
Sign In Attendance Register .....	9
Notification of Absences .....	9
Daily Pick Up / Collection .....	10
What to bring to Kinder:	
Bags and Backpacks .....	10
Food .....	10
Lunch .....	10
Food Allergies .....	11
Sun Smart / Sun Protection Policy .....	11
Clothing .....	11
DAILY ROUTINE .....	12
Show & Tell .....	12
Education Program .....	13
COMMUNICATION WITH PARENTS .....	14
Parent Concerns and Queries .....	14
PARENT INVOLVEMENT	
Parent Helper Roster .....	15
Parents & Friends / P&F Sub-groups .....	16
Working Bees .....	16
OTHER THINGS YOU MAY NEED TO KNOW .....	17
Separation Anxiety .....	17
Hygiene .....	17
Birthdays .....	18
Kindergarten Photos .....	18
Parent Library .....	18
Kindergarten Policy Document .....	18
Headlice .....	18
EMERGENCY PROCEDURES .....	19 - 24
HEALTHY EATING/WHAT TO BRING TO KINDER .....	25 - 26

## PHILOSOPHY



The Yackandandah Kindergarten provides high quality, inclusive preschool education.

The emphasis on learning through play offers children a safe and caring environment in which to explore and grow in areas of health, learning, personal and social development, and wellbeing.

It respects and accepts each child as an individual, valuing unique abilities, interests and needs.

It also respects the role of the family in shaping the child's learning and development and acknowledges the importance of community involvement.

Yackandandah Kindergarten is committed to sustainable practices and fosters environmental awareness.

### Values

Honesty  
Respect  
Learning



## MANAGEMENT STRUCTURE

Yackandandah Kindergarten is a licensed children's service operated by the Approved Provider, Yackandandah Primary School. The Yackandandah Primary School under the guidelines of the Department of Education and Early Childhood Development (DEECD) is responsible for the management of our Kindergarten.

A Kindergarten Sub-Committee facilitates the management of the kindergarten service. The Kindergarten Committee currently comprises: Yackandandah Primary School Principal, Kindergarten Educational Leader, at least two representatives of School Council, two 4 year old Kindergarten parent representatives, two 3 year old Kindergarten parent representatives and our Administration Officer.

Parents are urged to become involved in the Kindergarten either as a parent representative on the kindergarten committee or as an active participant of the Parents & Friends groups. There is also the opportunity to participate on the parent helper roster which will be discussed later in this information booklet. Meetings are held once per month and all families are invited to attend.

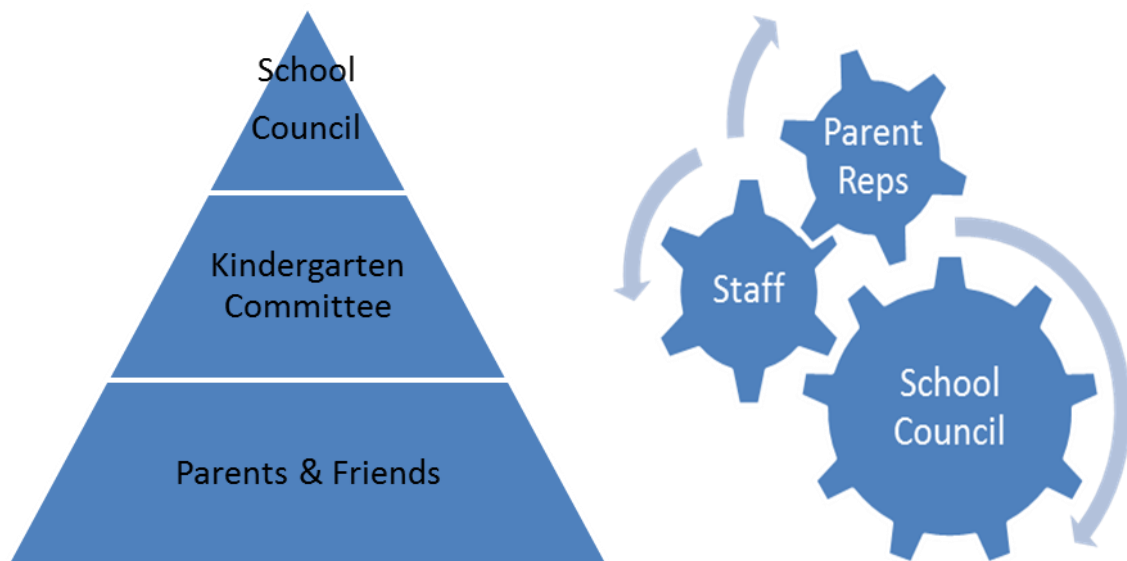
A list of committee members is displayed on the notice board at the entrance of the kindergarten.

The following email addresses are available for contacting Staff and/or Committee members:

- Kindergarten Educational Leader (Director): [director.yackandandah.kin@kindergarten.vic.gov.au](mailto:director.yackandandah.kin@kindergarten.vic.gov.au)
- Administration: [yackandandah.kin@kindergarten.vic.gov.au](mailto:yackandandah.kin@kindergarten.vic.gov.au) or [rockliff.jennifer.j@edumail.vic.gov.au](mailto:rockliff.jennifer.j@edumail.vic.gov.au)
- Principal (as Approved Provider Responsible Officer): [oconnell.debbie.d@edumail.vic.gov.au](mailto:oconnell.debbie.d@edumail.vic.gov.au)

Other contact details are included on the Yackandandah Primary School website: [www.yackaps.vic.edu.au](http://www.yackaps.vic.edu.au)  
Select the kindergarten tab. Alternatively, the direct link is: [www.yackaps.vic.edu.au/kindergarten/html](http://www.yackaps.vic.edu.au/kindergarten/html)

## Yackandandah Kindergarten Working Together



**Yackandandah Kindergarten Committee**  
a sub-committee of Yackandandah School Council

## SERVICE INFORMATION

### LICENSE TO OPERATE CHILDREN'S SERVICE

Yackandandah Primary School is the Approved Provider of the Approved Children's Service operated as Yackandandah Kindergarten.

**Approved Provider:** Yackandandah Primary School

**Responsible Officer:** Debbie O'Connell (Acting Principal)

**Nominated Supervisor:** Marisel Blefari

**Children's Service Regulatory Authority:** DEECD Victoria – *Department Education & Early Childhood Development*

**Copies of relevant legislation can be found in the foyer of the kindergarten:**

EDUCATION & CARE SERVICES NATIONAL LAW ACT 2010

EDUCATION & CARE SERVICES NATIONAL REGULATIONS

**For your reference a copy of the Yackandandah Kindergarten Policy Document** can be found in the foyer of the kindergarten.

## PROGRAM INFORMATION

The central focus of Yackandandah Kindergarten's educational programs is on outcomes for our children. Our programs are based on an approved learning framework which considers the developmental needs, interests and experiences of each child and takes into account the individual differences of each child. (*Refer VEYLF-Victorian Early Years Learning Framework & NQF – National Quality Framework*)

## QUALITY ACCREDITATION

Our Kindergarten operates in accordance with the National Quality Standards (NQS) under the Education & Care Services National Law and Regulations. In September 2012 the service was assessed under the National Quality Standards (NQS) as a children's service meeting all quality standards. The seven Quality Areas under the NQS are:

1. Educational program & practice
2. Children's health & safety
3. Physical environment
4. Staffing arrangements
5. Relationships with children
6. Collaborative partnerships with families and communities
7. Leadership and service management

The Standard ensures that our service adopts approaches that are most appropriate to and focus on the best outcomes for the children being educated at Yackandandah Kindergarten.

## Program Information cont.

### STAFFING / QUALIFICATIONS

All Educators and Assistants working at the service are suitably qualified to work in a licensed children's service.

Our kindergarten programs will be taught by a four-year university-training early childhood teacher, referred to as an Educator.

All staff members hold current First Aid, Asthma Management and Anaphylaxis Management Certificates and a current Working With Children Card along with having undergone a Police Check.

From time to time the service assists in the training of pre-service teachers (La Trobe or Charles Sturt University / Wodonga TAFE students), and participates in providing work experience/community service for secondary school students.

### 2015 STAFF PROFILE

**Educational Leader:** Marisel Blefari

#### 4 year old Kindergarten program

Our 4 year old program is to be lead by **Educator - Marisel Blefari**

Marisel holds a qualification equivalent to a Bachelor of Early Childhood Education.

During each 4 year old session Marisel will be supported by two co-workers.

**Nicky Isaac (Assistant)** will assist throughout the morning and lunch periods. Nicky holds a Certificate III in Children's Services.

Marisel will then be supported for the rest of the afternoon by **Claire Vale (Assistant)**. Claire holds a Diploma in Children's Services.

#### 3 year old Kindergarten program

Our 3 year old program will be lead by our **Educator, Anna Webb**. Anna holds a Bachelor of Early Childhood Education. Anna is supported by **Nicky Isaac (Assistant)**.

The role of Assistants across each of the programs is to support the Educator's plans and assist with the everyday operations of each session.

#### Administration

All administrative tasks, including enrolment arrangements are handled by the Kindergarten Administration Officer, **Jen Rockliff**. Jen is based out of the office at the kindergarten during the mornings of most sessions or out of the Yackandandah Primary School office. (*Refer contact details Management Structure page 3*).

## **ENROLMENT / INDUCTION**

### **TERM DATES 2015**

Term 1: 28 January (school teachers' start) to 27 March

Term 2: 13 April to 26 June

Term 3: 13 July to 18 September

Term 4: 5 October to 18 December

\*Pupil Free Days, dates to be decided, are held one day per term in which Teachers conduct Professional Development and these fall in line with Yackandandah Primary School (Service Provider). There will be **no** Kindergarten on these days.

### **SESSION TIMES**

The Australian Government is committed to ensuring that every child has access to a quality early childhood education program. The program is to be delivered by a four-year university-trained early childhood teacher, for 15 hours a week, 40 weeks a year, in the year before full time schooling (often referred to as 'preschool' or 'kindergarten'). In 2015 Yackandandah Kindergarten will provide 15 hours of kindergarten to children enrolled in the 4 year old kindergarten program.

### **4 YEAR OLD KINDERGARTEN**

Sessions for four year old kindergarten are on Monday, Tuesday or Thursday during the Victorian school terms.

Each child will be enrolled for two days per week, which in 2015 will run from 8.30am to 4.00pm.

Families may opt to collect their child earlier than 4.00pm on a regular basis. Whilst our kindergarten is flexible in working with families, we must ensure that continuity of delivery of the program is not impeded; therefore the earlier collection time will be 2.00pm in Terms 1 and 2 and 3pm in Terms 3 and 4. Families will need to advise the Educational Leader that they intend to collect their child at 2.00pm on a term by term basis.

At Yackandandah Kindergarten children are enrolled in a kindergarten educational program which is carefully tailored to individual learning plans. Whilst we are aware that there may be issues/appointments from time to time that necessitate earlier collection times other than 2.00pm, we ask that families are mindful of the interruption to the classroom activities.

### **3 YEAR OLD KINDERGARTEN**

Sessions for three year old kindergarten are offered weekly on Wednesdays during the Victorian school terms.

Children will enrol in the one session per week from 9.00am to 2.30pm.

## Enrolment / Induction cont.

Once all enrolment forms are lodged and the enrolment fee paid, your child's enrolment in the Yackandandah Kindergarten program is confirmed.

All children currently enrolled at the service will have an interview with their teacher late in 2014 or early in 2015. All families and their child will be asked to attend an interview.

The dates for these interviews are Monday 17 November through to Friday 28 November.

## FEES AND FUNDING

Victorian Kindergartens receive a set amount of funding from DEECD for every eligible child that is enrolled and attends 4-year-old Kindergarten. The three year old program is not a funded program. Fees are due the first two weeks of each term or you may enter a payment plan with the Kindergarten. Contact Jen for more details.

The Yackandandah Kindergarten Fees Policy sets out the term fees charged to families for 2015.

### Yackandandah Kindergarten Fee Structure 2015:

<b>Enrolment Fee:</b>	\$30 per enrolment	A payment to cover administrative costs associated with the enrolment of a child in a program at Yackandandah Kindergarten. This fee is only refundable if a place cannot be secured for the enrolment request.
<b>Term Fee 4 year old Kindergarten:</b>	\$325 per term	Non-refundable term fees based on 15 hours service delivery per week.
<b>Term Fee 3 year old Kindergarten:</b>	\$300 per term	Non-refundable term fees based on 5.5 hours service delivery per week.
<b>Maintenance Levy:</b>	\$30 per family	Family contributions to the maintenance of our kindergarten grounds.

**A Fees Payment Agreement accompanies the Enrolment Form and should be signed and returned with the completed form. Families will be issued with an invoice at the start of the year for the full year's fees. Statements will be issued each term.**

**Fees can be paid by way of Electronic Funds Transfer to the following WAW account:**

**Yackandandah Primary School BSB: 803-070 Account No#: 48135**

Or by cheque/cash payment at the Yackandandah Primary School Office or via the fees box at the kindergarten.

## REGISTERED CHILD CARE REBATE

If both parents/guardians of the child are working or undertaking study you may be eligible to claim the Registered Child Care Rebate.

Rebates can be claimed at the end of Term 2 and Term 4. Fees need to have been paid to be able to make a claim. Please request a receipt for Child Care Rebate purposes from the Kindergarten Administration Officer.

## HEALTH CARE CARD HOLDERS

Kindergarten fees are subsidised by DEECD for those families who hold Health Care Cards (HCC). It is important to register as a Health Care Card holder at your enrolment interview in December by bringing along a current HCC. A copy of the current HCC will be made by Administration Officer and kept on record, so that the kinder may obtain the additional funding. Your own kindergarten term fees will then be reduced significantly. This information will be dealt with confidentially. You will receive the subsidy for the full year if your HCC does not expire during the kindergarten year. However, if the card does expire during the kindergarten year, the subsidy will only apply to the term fees in which the card is current.

## MEDICAL CONDITIONS & ACTION PLANS / MEDICATIONS

**Families are responsible for providing information to the service on any medical condition/s or additional need/s of their child.**

Parents should convey as much information as possible (in writing via the enrolment form or additional notes), to the Educational Leader or Administration staff.

This information will be discussed at your enrolment interview in November, prior to the start of the kindergarten year.

Please provide copies of any medical or developmental assessments where required.

It is a parent obligation to provide the service with such details so as to assist kindergarten staff in providing for their child's healthy and safety at the service.

### ASTHMA

Our Asthma Policy states that all children with asthma require an *Asthma Action Plan* to be completed in consultation with your doctor and attached to your child's enrolment form. Each child will be required to bring their own devices (puffer, spacers) and medication (ventolin etc). A child cannot attend kinder without bringing their own device/medication. You will be given a copy of the Asthma Policy at your interview.

### ANAPHYLAXIS

Our Anaphylaxis Policy states that all children with anaphylaxis require an *Individual Anaphylaxis Risk Management Plan* to be developed by the Educational Leader in conjunction with parents and staff.

An *ASCIA poster Action Plan for Anaphylaxis* signed off by the child's doctor will also be required. Each child will be required to bring their own adrenaline autoinjector (eg. Epipen). A child cannot attend kinder without having supplied their own device.

**Extra time will be allocated during your child's Enrolment Interview to discuss these requirements.**

### MEDICATION

If your child needs to take medication of any kind during kinder times, written authority must be given by the parent or guardian concerned on the day to be administered.

A form will be available at your interview to fill out the necessary requirements regarding administering long-term medication.

Each time medication needs to be administered a parent will need to sign an authorisation form before and after the medication has been given to their child.

All medication must be provided in its original bottle/packaging clearly labelled with your child's name, dosage required etc. Medications will be safely stored during the session and are only to be administered by a staff member. Please ensure that prescribed medication is specifically for your child. Staff are not permitted to administer medication that is prescribed for another family member.

**By law, staff are only allowed to give the recommended dosage of medication to your child, so please don't ask them to do otherwise.**

If your child requires first aid of any kind after an accident or medication is administered, it will be recorded in the *medication/illness/injury folder*.

A red dot will be placed next to your child's name in the sign in book to notify you that you need to see a staff member to sign the *medication/illness/injury folder*. If your child becomes ill whilst at kinder, parents or the child's emergency contact/s will be requested to collect the child.

In the case of an emergency, an ambulance will be called if required. The ambulance is not a free service, so we recommend you consider having ambulance coverage if you have not already done so.

## DAILY PROCEDURES AT KINDER

To ensure that your child's kinder day gets off to a smooth start and to enable us to provide you with a quality early childhood education service, there are some procedures that families need to be aware of prior to starting kindergarten.

### DAILY ARRIVAL AT KINDER

- The arrival time for 4 year old kindergarten (Mondays, Tuesdays, and Thursdays) is strictly 8.30 am.
- The arrival time for 3 year old kindergarten (Wednesdays) is 9.00 am.

It is important for safety reasons that children do not arrive early at Kinder. The working day for our staff begins earlier providing time to set up the room in preparation for the session before welcoming children at the official session time.

Our staff are not legally able to supervise children until the official start time of the program. Please note the door will not be opened until that time.

### Signing your child in and out of the attendance register daily

Under the National Regulations your child must be signed in to the attendance register (sign in book) on each day that they attend kindergarten.

The person collecting your child at the end of the session must sign your child out of the attendance register and record the child's time of departure.

The sign in book is located on the table as you enter the kindergarten classroom.

**As this is an official record of children's attendance and the first document required in an emergency situation, we require an accurate recording of information therefore this book is for adult use only. Please ensure children/toddlers do not write in this book. FULL NAMES of people dropping off or collecting your child are a legal requirement. The sign in book is picked up and taken in emergency situations.**

Each family will have completed the 2015 enrolment form on which you will have nominated persons authorised to collect your child. Kindergarten staff are not able to release your child into the care of any person other than one who is nominated as an authorised contact.

**It is the responsibility of parents** to notify the kindergarten in writing regarding changes to information recorded about their child: address, work numbers, emergency contacts and if someone other than a current authorised person is collecting their child from kinder. This person's name will then be added to your child's enrolment.

Staff cannot release a child to any unauthorised person regardless of how well known that person may be to them or your child.

### NOTIFICATION OF ABSENCES FROM KINDER

Families are asked to contact the Kindergarten prior to 8.30 am to advise of their child's absence from kinder.

### REQUESTS DURING SESSION TIME

For the safety of the children, families are asked to keep doors closed at all times.

Families and visitors are also asked to be mindful of keeping noise to a minimum when entering the kindergarten prior to and during sessions to allow the children to focus on the program. Any visitor to the Kindergarten must sign the Visitors Book.

## DAILY PICK UP FROM KINDER

It is in the best interest of the children and a courtesy to staff for parents/carers to ensure responsible and prompt collection of children. If children are not collected within 10 minutes of the session finish time staff will follow procedures as per the service's *Delivery & Collection of Children Policy*.

As discussed earlier in this booklet, (*refer Session Times*), families are asked to keep early pickup from sessions to a minimum unless otherwise necessary, or as arranged on a term by term regular basis in the case of the nominated 2.00pm collection from 4 year old kindergarten.

## WHAT TO BRING TO KINDER

### BAGS AND BACKPACKS

Prior to your child's first day a coat peg and bag shelf will be allocated, clearly marked with your child's name. During the start of year interviews and orientation session your child will be shown the bag area so they know where to put their belongings on their first day.

- Each child needs to bring a **kinder bag or backpack** that is large enough to carry a sunhat, lunch, water bottle, set of spare clothes and completed artwork. Please mark it clearly with your child's name and teach your child to open/close the bag themselves.
- Bags are to be placed on the child's bag shelf at the kinder.
- Sunhats, warm, wet-weather gear and a spare set of clothing are to be kept in the child's bag so that children can access them easily throughout the day.

Children's work will be placed on their bag shelf. Parents are asked to collect work daily. Portfolios with children's work will be placed in a filing cabinet. Families are encouraged to check them on occasion to follow their child's development

### FOOD – MORNING/AFTERNOON TEA & LUNCH

**Children will sit down to a morning and afternoon tea each session.**

We ask that each child brings a packed morning tea consisting of cut fruit or vegetable in a container with their name on it, yoghurt and cheese. Children are also asked to bring their own water bottle. Afternoon tea is required and we suggest fruit, crispets or other crispbreads, homemade muffins/cake.

Our Kindergarten's *Nutrition, Healthy Eating and Active Play Policy* promotes the importance of a healthy lifestyle, as such we ask that no treats (eg muesli bars that contain nuts, fruit roll-ups or chocolate bars), cordial or other drinks be bought to kinder. These types of food will be returned home, unopened.

**Children will sit down for their lunch each session.**

All children must bring along a packed healthy lunch and water bottle (named). We would suggest that a sandwich/wrap, piece of fruit/vegetable would be suitable. Lunch is an important time at kinder where children love to sit down and chat with their friends and Educators. If you are a parent helper at kinder, remember to bring along your own healthy packed lunch too so you can sit down and enjoy the company of your child and their peers. The Kindergarten has joined the waste wise program with a view to minimising rubbish and waste at the Centre. Please consider **nude food** lunchboxes (no need to cling wrap or use additional packaging).

## **FOOD ALLERGIES**

Our Kindergarten aims to provide a nut-free environment in line with our Anaphylaxis Policy. Please avoid sending your child to kindergarten with nuts, nut products etc. Any package that reads 'it may contain traces of nuts' are **not** to be brought into the Kindergarten. Children or families who suffer from nut allergies can have fatal reactions to any traces of nuts so please be mindful of our Policy.

## **CHILDREN'S BIRTHDAY CELEBRATIONS AT KINDER**

In line with our service's revised Anaphylaxis Policy families are asked to note the following changes:

Families who would like to celebrate their child's birthday at kinder by bringing in birthday cakes are asked to prepare simple, small cupcakes from the recipe attached. Families are asked to contact kinder staff one week prior to the session to check how many cupcakes will be needed – the staff will allocate additional time for the celebration at the lunch break.

Each child enrolled at kinder who is at risk of an anaphylactic reaction or who suffers from food allergies will be asked to provide a small batch of cupcakes suitable for their own child's sole consumption at kinder. These cakes need to be in a sealed container, well labelled with their child's name and kinder group. Where another family brings in cupcakes for the children to share, each child with at risk of exposure to allergens will be given one of their own cupcakes from the freezer. This is a further measure to ensure that only food provided by the family is consumed by a child at risk.

Prior notice of families bringing in cakes to particular session is appreciated, so as to allow time for the frozen cakes to thaw. We trust that families can appreciate the need to take steps so as to minimise the risk of exposure to allergens for each child. More information and the recipe can be found on Page 18.

## **SUN SMART / SUN PROTECTION**

Yackandandah Kindergarten is a registered 'Sun Smart' kinder. Our Sun Protection Policy requires all children to wear a broad brimmed sun hat from the beginning of September to the end of April, whilst outside.

Please apply sunscreen at home prior to attending kinder so that it is activated prior to our morning outdoor session time. If you have any specific requirements regarding your child and the sun, please contact the Educational Leader or our Administration Officer.

Those children who do not have a broad brimmed hat to wear are required to stay in the shade. Please remember to put one in your child's kinder bag and if possible leave it there for the required months. We also encourage parents on duty to wear a hat when outside. Staff will also do the same.

## **CLOTHING**

Children should wear **named** comfortable play clothes to kinder which cover the shoulders.

A spare set of suitable clothing (and underwear) must be packed into your child's bag. Please check this to ensure the spare clothing fits your growing child.

For your child's safety, solid shoes are recommended. Thongs, flip/flops, open backed shoes (slip ons) are not safe for outside activities. Dangling earrings are dangerous. Please consider what jewellery is appropriate for your child to wear at kinder.

**Tee-shirts, hats and windcheaters with the kindergarten logo are available for purchase from Brunella's;** please note that a uniform is not compulsory. We have noticed that children occasionally have issues when different hats are worn so we suggest purchasing a hat to alleviate this.

## DAILY ROUTINES

FOUR YEAR OLD KINDERGARTEN		THREE YEAR OLD KINDERGARTEN	
Daily Routine		Daily Routine	
8.30 am	Kinder session starts  Welcome children and families	9:00	Children arrive Children un-pack their belongings to appropriate spots.  Children sit on the welcome mat for songs and sharing time
8.30 - 8.40am	Mat time	9:30- 10:30	Inside activities
8.40 - 10.00am	Outdoor Play	10:30	Pack away and re-group on the mat for a story
10.05 - 10.35am	Snack time	10:45	Transition to bathroom to toilet and wash hands ready for morning tea
10.40- 12.10pm	Indoor play	10:50- 11:10	Morning tea
12.10 - 12.40pm	Pack away and Group Time	11:10 - 11:20	Re-group on the mat for music and movement
12.45 - 1.30pm	Lunch	11:20 - 11.55	Outside play weather permitting
1.30 - 2.00pm	Quiet Time and Story Time	11:55	Pack away
2.00pm	Early departure for Families who selected early collection	12:00	Transition to inside via bathroom to toilet and wash hands
2.00 - 2.30pm	School Readiness activities (Puzzles, games, fine motor activities )	12:10 - 12:30	Lunch
2.30- 3.00pm	Music activity (songs , instruments, movement activities)	12:30	Pack away belongings and pack bag ready for home time
3.00- 3.30pm	Afternoon Snack	12:20 - 12:45	Quiet time (Relaxation music)
3.30 - 3.45pm	Tidy up room Children organise belongings  Group time /discussions about the day/ songs.	12:45	Story / group discussion / game
4:00pm	Children depart	1:00	First home time pick up  Those staying until 2:30 stay grouped until first pick up children have left.
		1:10 - 1:30	Structured drama OR art class (small groups)
		1:30 -2:15	Inside activities OR outside time with art and craft weather permitting
		2:15	Pack away and re-group on mat for a game or story before home time
		2:30	Home time

## **SHOW & TELL**

A show and tell roster will be sent home for the 4 year old kindergarten sessions. Your child will be asked to bring along a *show & tell* item of interest on their allocated day which is connected to the program topic. The topic or theme will be advised on the Program.

Regular Show & Tell will not be part of the 3 year old kindergarten program. However, should your child have a topical item of interest that they would like to share with their peers please discuss with the session Educator.

## **EDUCATION PROGRAM**

The Early Years Learning Framework (EYLF) describes the principles, practice and outcomes essential to support and enhance young children's learning from birth to five years of age, as well as their transition to school. The Framework has a strong emphasis on play-based learning as play is the best vehicle for young children's learning providing the most appropriate stimulus for brain development. The Framework also recognises the importance of communication and language (including early literacy and numeracy) and social and emotional development.

Our Educators plan each session around the EYL Framework.

A family resource booklet: *'Introduction to the Early Years Learning Framework'* is attached to our 2015 Information Booklet for your convenience. To find out more or to access translations visit [www.deewr.gov.au/earlychildhood](http://www.deewr.gov.au/earlychildhood) or ask your child's early childhood educator.

## **Learning Outcomes**

The five learning Outcomes are:

- Children have a strong sense of identity
- Children are connected with and contribute to their world
- Children have a strong sense of wellbeing
- Children are confident and involved learners
- Children are effective communicators

## **REFLECTIVE DIARIES AND INDIVIDUAL PORTFOLIOS**

The outcomes are broad and observable. Educators will make observations and record your child's learning experiences in an individual portfolio. These portfolios are available for parents/families to view at the kindergarten.

Weekly Reflective Diaries for each program will be completed and made available to families via newsletters, and displays at kinder.

## EXCURSIONS AND VISITS

Educators will incorporate excursions and visits to our service into the educational program. Our kindergarten aims to provide opportunities for all children to participate in excursions and enjoy the visits to kinder by community groups, shows etc. Excursion or visits will be selected and encouraged based on the educational benefit to the children. Children will attend excursions that take place on their day only.

Permission forms detailing excursion dates, educational purpose and any costs involved will be sent out to parents for signature and payment prior to excursions.

## COMMUNICATION WITH PARENTS

The staff and management will use a variety of methods to ensure that parents are kept apprised of kindergarten news, developments, activities and programming. It is important that you check the following communication avenues on a regular basis:

- Your child's **Information Pocket** on the red hanger should be checked daily;
- Your child's **Bag Shelf** should be cleared daily;
- The **Newsletter** which will be distributed via email and hardcopy is available if required.
- The **Noticeboard** in the foyer;
- The **Term Planner** in the classroom;
- Your **Email** address; *(during the enrolment process you will be asked to sign a blanket approval to allow kindergarten staff to pass on information via email. Such information may include notices from Parents & Friends working parties).*
- Your **Postal** address.
- The Primary School **website** [http://www.yackaps.vic.edu.au/documents\\_media.html](http://www.yackaps.vic.edu.au/documents_media.html) please choose the Kindergarten tab.

## FORMS / PAYMENTS / ORDERS

A locked collection box is located in the kindergarten foyer. Any signed permission forms, fundraising or clothing orders, and payments or payment of kinder fees can be dropped into the box for collection by administration staff. Payments must be made prior to excursion.

Parents/carers are asked to ensure that any payments are placed in an envelope clearly marked with your child's name, item being paid for, amount inserted etc. Please refer to page 7 for fees payment information. A receipt will be forwarded to families for all payments.

## FAMILY FEEDBACK SURVEY

Throughout the year families will be asked to complete a survey to assist management in ensuring the service meets the expectations of the kindergarten community. This survey will be mailed out to families and mentioned in the kindergarten newsletter. All responses are treated in confidence by the management committee.

## **PARENT CONCERNS AND QUERIES**

The staff and committee work closely together to provide the best program possible for your children, so your input will be most welcome. If you have any queries or concerns regarding the program or wish to discuss your child's progress, please do not hesitate to approach the Teacher.

It is sometimes difficult for the Teacher to have such an important discussion at drop-off or collection times, so please ask to set some time aside for you after the session has finished or make an appointment for an alternate time/day.

Parent concerns and queries can also be directed to the Educational Leader (Director) or Approved Provider (Yackandandah Primary School Principal).

## **PARENT INVOLVEMENT**

The great thing about having a child at kinder is watching them develop friendships and social skills, and helping them to discover hidden talents!

### **Parent Helper Roster**

We invite all parents to join in the fun of kinder as a Parent Helper. A duty roster will be drawn up each term based on your availability. A copy of the roster is put in your child's information pocket at the start of each term, displayed in the foyer and included in newsletters.

You will be asked to help with general activities with the children; but most of the time can be spent enjoying the kinder environment with your child and their friends. It is lots of fun and the children love it when their mum or dad or relative or friend is on duty.

### **Parent Skills & Interests**

Your presence, knowledge, skills and interests are greatly valued by our kindergarten and in fact can enhance the program. If you or any family member has a special interest or talent that you would like to share with the kindergarten children please let the Educational Leader know. A visit will be scheduled in to work in with the program topics. Your involvement and collaborative relationship within the kindergarten is invaluable in enhancing the quality learning outcomes for our children.

### **Visitor's Register**

Any time a parent/carer visits the kindergarten, whether it be as a rostered parent helper or impromptu visit they will be asked to sign themselves into the Visitor's Register on the sign in table. Anyone (including children) accompanying them must also be signed in. On departure they must also sign out of the Visitor's Register.

### **Other Children / Siblings**

Babies/toddlers are welcome to come along when you attend kinder however parents are to be responsible for them and to supervise them at all times both indoors and outdoors. The National Regulations require a specific child/adult ratio when taking children outside the kindergarten, for eg. on excursions etc., therefore toddlers are unable to attend on these special days.

Please ensure that your toddler (under 3 years) is supervised at all times, particularly on the playground equipment. Materials used in the kindergarten such as small beads for example, may not be suitable for children under 3 years.

If you cannot do kinder duty because of work or other commitments, please consult with the staff about alternative ways of being involved.

Please remember- **PARENTS ARE ALWAYS WELCOME AT KINDER AT ANY TIME** - ours is a community Kindergarten and the more people are involved, the better.

## **PARENTS & FRIENDS GROUP**

All families are invited to be part of the Parents & Friends group from which working parties (sub-groups) will be formed. Families are invited to participate in the following sub-groups for 2013:

- **Fundraising** - provides additional funds to enhance the kindergarten
- **Social** - provides social functions and opportunities to encourage all families to feel part of the kinder community
- **Maintenance**
- **Newsletters / Community Noticeboard**

## **WORKING BEES**

Another area where parent/family support is invaluable is the maintenance of our kinder and resources. Whilst Yackandandah Kindergarten appoints a contracted gardener who completes general garden maintenance (mowing, raking leaves, weeding etc), we rely on the assistance of all families throughout the year to attend working bees. Working bees will be co-ordinated by the Maintenance sub-group and are usually held on Saturday or Sunday morning from 9am to approximately 12pm as required.

## OTHER THINGS YOU MAY NEED TO KNOW

### SEPARATION ANXIETY / SETTLING IN

Some children will find the new experience of kindergarten very exciting and have no difficulty separating from their parent or caregiver. However, some children may feel threatened or frightened in the new environment and/or may not have separated from their parents for a considerable amount of time prior to attending kindergarten.

During this transition your child's behaviour may change and mood swings may be evident. It is important to support your child and help them gradually settle into their new surroundings.

**Initially your child may insist that you stay with them and we believe that this is important at the beginning of the year. However, if your child continues to have difficulties settling in, here are a few hints and strategies which may encourage a smooth and happy transition for you and your child:-**

- Come into kindergarten with your child and help settle him/her into an activity.
- If your child would like you to stay a while, please feel free to do so.
- Once you have said goodbye to your child and the teacher, it is important that you leave. If your child is insecure he/she may become more upset if you hesitate.
- Our staff will contact you if your child had been upset or unsettled at drop off time. Generally, children will have settled down well as soon as parents are out of sight, but a reassuring phone call will set your mind at ease. If your child remains unsettled or is distressed, our staff will contact you to come in to kinder. We are guided by what is in the best interests of the child at all times.

### HYGIENE

This service is committed to minimising the risk to children associated with infection and contamination of food and/or the environment. National Regulations must be adhered to. To that end we have in place several important requirements for staff, children and parents to follow:

- **To reduce the risk of infection of others, children who are ill should not attend kinder.** Information regarding exclusion periods for infectious diseases will be located in the foyer.
- Parents are asked to contact the kindergarten to report cases of infectious diseases amongst their kindergarten child or siblings. A notice advising families of reported cases will be displayed at the kindergarten in attempt to limit the spread of the disease. Symptoms and suggested treatment of the particular disease will be highlighted. All cases are treated with confidentiality.
- Hygiene procedures must be adhered to at all times. A colour coded system has been put in place for cleaning tables and preparing food. As a parent helper at kindergarten you will be asked to adhere to this system, please ask staff for clarification. Procedures for food preparation at kinder, (washing hands, wearing disposable gloves, etc) must be followed. Signage will be displayed in the kitchen to inform parents of these procedures. A copy of the Hygiene policy is displayed in the Policy document in the foyer.
- Hand washing by both children and staff will also be encouraged after using the toilet, before eating, and after blowing noses.

## HEADLICE

Whilst parents have the primary responsibility for detection and treatment of head lice, Yackandandah Kindergarten will work in a collaborative manner to assist families to manage head lice effectively.

As our policy follows Victorian Health Regulations, we require you to regularly conduct head lice inspections, and if any are detected commence safe treatment practices.

It is important to note, that health regulations require that when a child has head lice, that the child should not return to Kindergarten until the day after appropriate treatment has started. This refers only to those children who have live head lice and does not refer to head lice eggs. However, please be aware that no treatment kills all the eggs, so all treatment programs must include at least two applications. Please seek advice from your local pharmacy if you are unsure of the right treatment for your child.

Families in your child's group will be made aware of the detection of head lice, through a generic letter, this means your child's name will not be disclosed.

It is very important that the kindergarten is informed of when the head lice treatment has commenced.

There is no requirement for our kindergarten to undertake —head-lice inspections, however, teachers and/or assistants will inspect a child's hair if they have reason to suspect head lice.

### **If live lice are present**

#### The staff will:

- Contact parent by phone and ask to collect the child.
- Advise the parent of the inspection and provide a form which advises live lice were found and outlines the actions required
- Notify all parents in the group of the detection of head lice to ensure that they check their children and apply appropriate treatments as necessary

#### What can families do?

- Start immediate treatment on your child.
- Check all members of the family
- Change bedding
- Sign and return Action Taken Head Lice Form to Kindergarten.

## **Birthdays**

Each child's birthday is celebrated at kinder, even if they occur during the holidays or on a non-kinder day. If you would like to send along enough small cupcakes for each child to celebrate your child's birthday, please do so. Please only bring in small cupcakes with moderate food colouring and sugar. Please provide a list of ingredients to help accommodate children with food allergies and ensure there are **no** nuts or nut products contained in the item.

## **Party Cup Cake recipe**

This recipe has been used with permission from Edan's Kitchen  
Egg-Dairy- And- Nut- Free Baking cookbook available from Anaphylaxis  
Australia Inc [www.allergyfacts.org.au](http://www.allergyfacts.org.au)

- 1 1/2 cups self raising flour
  - 1/3 cup dairy and egg free custard powder
  - 1 cup sugar
  - 1/3 cup canola oil
  - 1 teaspoon vanilla essence
  - 1 cup cold water
1. Preheat oven to 180°C
  2. Combine flour, custard powder and sugar
  3. Add oil, water and vanilla and mix well
  4. Pour batter into prepared patty cases until almost full
  5. Cook at 180°C for about 20 minutes or until skewer is inserted and comes out clean
  6. Decorate with icing and or lollies
  7. When cupcakes are cool and have been decorated, place them inside the Food Allergy Awareness wrappers and share them with friends and family to say thank you for supporting people with food allergies.
- Tip: At the time of this going to print, Orgran Custard Powder is dairy and egg free.  
Always read product labels to ensure they are suitable to meet your allergy needs.

## **Kindergarten Photos**

The kindergarten will arrange for a professional photographer to take individual and group photos of your child. Photo Day will be notified in advance.

## **Parent Library**

The kindergarten has a small library of current books and pamphlets, available for use by parents. We urge parents to borrow and read them, thus helping you towards further understanding of your child's development.

## **Kindergarten Policies**

All Yackandandah Kindergarten Policies have been developed in consideration of the ELAA (Early Learning Association Australia recommended review schedule and the National Regulations. The Policy Document is displayed in the kindergarten foyer and is available to families at all times. Kindergarten staff are obligated to work directly from these policies ensuring child's educational welfare and safety are adhered to.

## EMERGENCY PROCEDURES

Yackandandah Kindergarten has an Emergency Management Plan which is reviewed regularly.

Planning to manage incidents and emergencies assists to protect adults and children, to maintain children's wellbeing and a safe environment and to meet requirements of relevant occupational health and safety legislation. Having a clear plan for the management of emergency situations assists educators to handle these calmly and effectively, reducing the risk of further harm or damage.

Information from the Emergency Management Plan is detailed in the following pages.

### **Bush Fire Awareness**

As part of the bush fire preparations the Department Of Education and Early Childhood Development has developed a Bushfire at Risk register for Victorian schools and licensed children's services that are considered to be at high risk of fire danger. Our kindergarten has been placed on this list.

Schools and children's services that have been identified as being at high fire risk will close on days declared a Code Red Fire Danger Rating Day.

Where possible, up to 3-days notice of a planned closure will be provided; parents and carers should, however, expect that in some instances less than 3-days notice may be provided. Advice will be provided to you directly by our school, you can also check this website for daily updates.  
<http://www.education.vic.gov.au/about/emergencies/closures.htm>

The final decision to close your school or children's service will be confirmed no later than midday the day before the planned closure. Once the decision to close is confirmed, this will not change – regardless of any changes in the weather forecast. This will help limit confusion and help your family plan for how your children will be cared for when their school, kindergarten or child care service is closed. When a school or children's service is closed for bushfire, no staff will remain on site. The safety of children and staff remains our paramount consideration.

### **Family Fire Safety Plan**

It is important that all families (particularly those in bushfire prone or high risk areas) have a family fire safety plan that aligns with their Kindergarten Emergency Management Plan.

The family fire safety plan should include information about alternative care arrangements for children in the event that the children's services are closed with some warning.

The family fire safety plan should be practiced so families are familiar with the procedures to be followed in a bushfire.

**It is imperative that families keep their authorised persons and emergency contacts details up to date.**

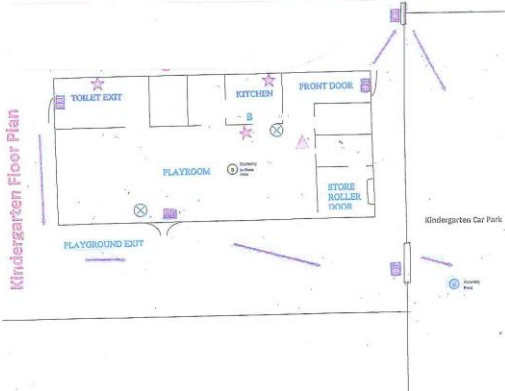
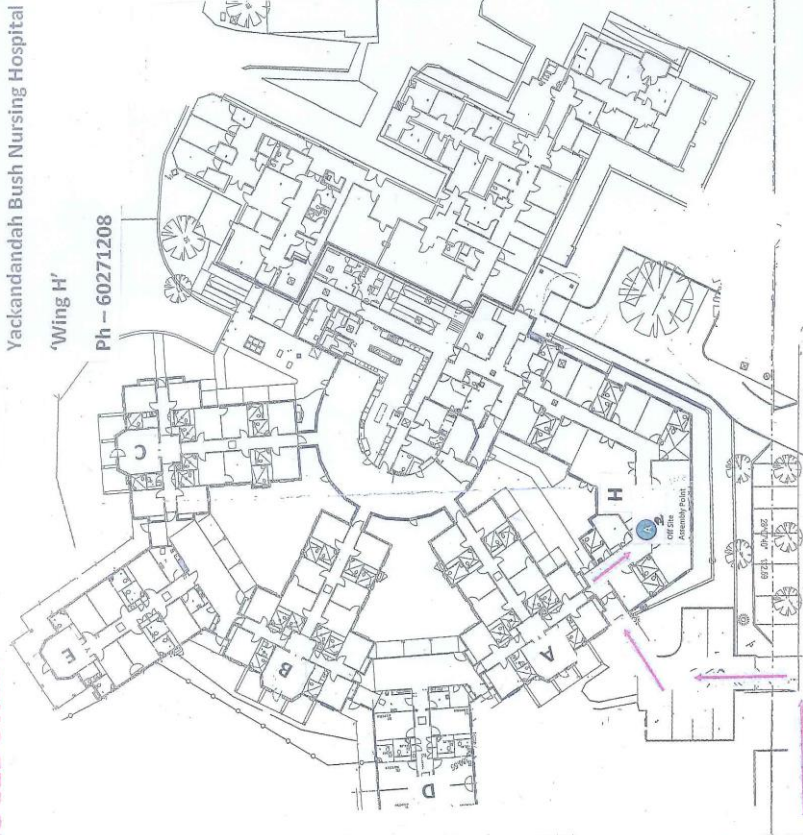
A 'Change of Child Details on Enrolment Form' is available from the sign in desk, administration staff and can be downloaded from the website. The form must be signed and returned to the kindergarten so as to enable the emergency plan to be updated.

EVACUATION ASSEMBLY AREAS

EMERGENCY PROCEDURES  
EVACUATION

ON HEARING THE ALERT WHISTLE....

- 1. Gather and evacuate all children from the immediate danger area.
- 2. Close the doors if safe to do so
- 3. If safe to do so, retrieve sign in book with family emergency contacts, emergency management plan and emergency kit, including mobile phone.
- 4. Move children toward emergency exit. All effort must be made to keep the children together.
- 5. Ensure all rooms are checked and free of children.
- 6. Proceed to designated emergency assembly area.
- 7. Telephone emergency services dialling 000
- 8. Telephone primary school principal to activate emergency plan.
- 9. Account for all children, staff and volunteers.
- 10. Children and adults are to remain at the Assembly Area until clearance to return to building has been given by relevant authority or until parent/guardian arrives to collect their child.



Assembly Areas

In-vacuation -

- Remain in Kindergarten Main Building
- Evacuation Area One - Kindergarten Car Park
- Evacuation Area Two - Yackandandah Hospital Area 'H'

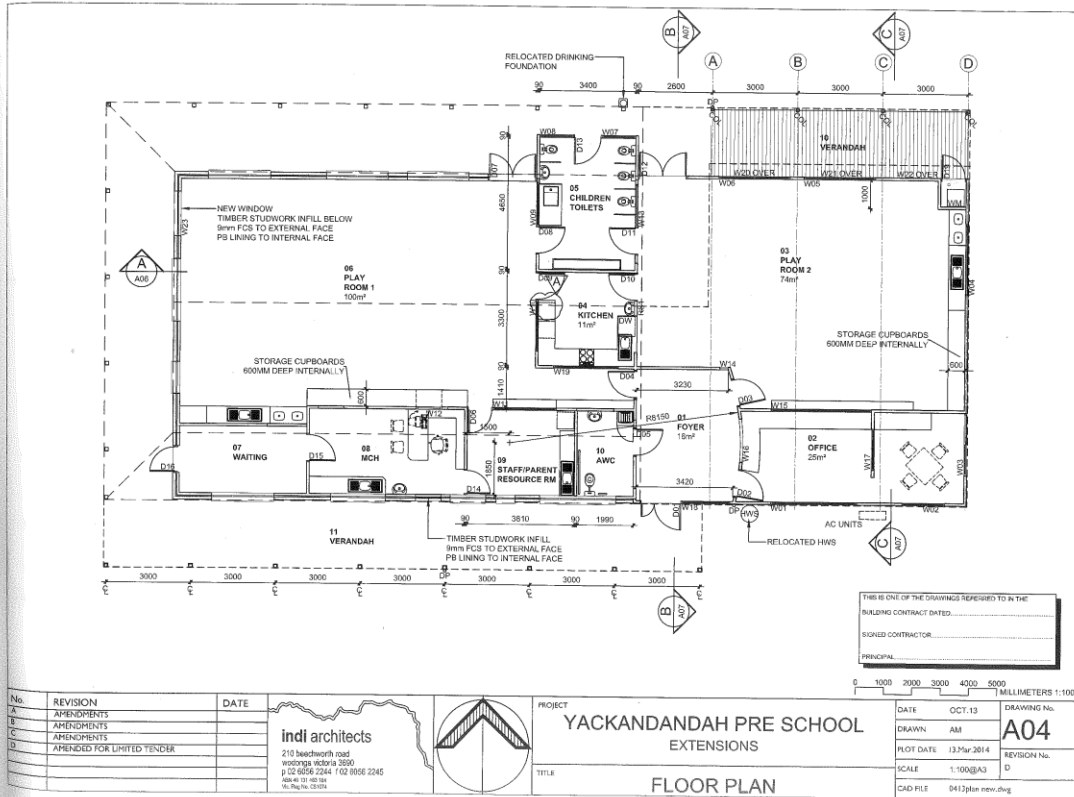
Isaacs Avenue

EMERGENCY NUMBERS

POLICE	000	YACKANDANDAH PRIMARY	0260271431	DEPARTMENT OF HUMAN SERVICES	0260557777
FIRE	000	CENTRAL MEDICAL GROUP	0260271404	DEECD REGIONAL OFFICE	0357612100
AMBULANCE	000	YACKANDANDAH MEDICAL CENTRE	0260271789	DEECD EMERGENCY CONTACT (Lauren Richardson)	0357625039
EMERGENCY MOBILE	112	YACKANDANDAH BUSH NURSING HOSPITAL	0260271208	DEECD EMERGENCY MANAGEMENT	0395896266
SES	132500	WODONGA HOSPITAL	0260517111		

# Yackandandah Kindergarten

## Floor Plan – Yackandandah Kindergarten



## Steps for Evacuation

### **Assembly Point:**

- Car park – outside gate
- Off site : If staff have to evacuate the whole kindergarten site, they will take the students to the Yackandandah Hospital Area H.

Staff have a set procedure that they must follow in the event of an evacuation.

If you are present at kinder as a parent helper please observe all instructions given by staff.

In this instance please directly supervise any child/person that you have brought with you to the kindergarten as a visitor.

### **Procedures that staff will follow:**

#### **EVACUATION ON HEARING THE ALERT WHISTLE....**

1. Gather and evacuate all children from the immediate danger area.
2. Close the doors if safe to do so
3. If safe to do so, retrieve sign in book with family emergency contacts, emergency management plan and emergency kit, including mobile phone.
4. Move children toward emergency exit. All effort must be made to keep the children together.
5. Ensure all rooms are checked and free of children.
6. Proceed to designated emergency assembly area.
7. Telephone emergency services dialling 000
8. Telephone primary school principal to activate emergency plan.
9. Account for all children, staff and volunteers.
10. Children and adults are to remain at the Assembly Area until clearance to return to building has been given by relevant authority or until parent/guardian arrives to collect their child.

**Bushfire:**

**Evacuate to** - Yackandandah Hospital Area H

**Communication**

In the event of a bushfire the prime consideration is the safety of children, teachers, staff and parents.

During such an event considerable confusion and worry may be prevented if the people concerned know the procedures to be adopted. We must insist that all parents and other school community members are aware of these procedures. We will ask parents and staff to familiarise themselves with these procedures and to discuss them with students.

**Triggers for closure**

- Planned or Pre-emptive closure: Emergency Services declare a Code Red fire danger day and advise that fire safety plans are enacted. In this circumstance, DEECD will advise the Approved Provider / Licensee that services in the designated areas are to enact their Emergency Management Plans and closure notification processes.
- This includes activating the communication tree and advising local ABC radio to inform all parents, students, staff and others providing services to the school of the proposed closure. Others may include bus operators, suppliers, support agencies, etc.
- Immediate closure: Emergency Services may occupy and control a school site and instruct the Principal/Licensee to close the service immediately in response to an imminent fire threat.
- Continuing closure: DEECD may require a service remain closed due to:
  - threat of continuing fires
  - unsafe access
  - potential smoke, water contamination or building safety concerns

**Service opening** - Following a bushfire incident services that have been closed can only reopen with the approval of the relevant Regional Director.

Parents, students and teachers will be advised when the kindergarten will be opened via the media, regional office and the DEECD website [www.education.vic.gov.au/bushfires](http://www.education.vic.gov.au/bushfires)

**During heightened fire danger**

- **evacuation to the Yackandandah Hospital – area H**

Parents/guardians should arrange to collect their children from:

- Yackandandah Hospital – area H

Educators must maintain an accurate record of students to enable the service to account for missing or extra children.

If parents/guardians need to collect their children prior to the end of the day, they must ensure the child is signed out.

Students must only be released to an authorised person. Staff must cross-check with the student emergency card which records the name of the person(s) authorised to pick up a student.

## Healthy Eating and Nude Lunchboxes

‘Yackandandah Kindergarten aims to provide children and their families with an environment that supports the development of healthy eating and drinking patterns, while also promoting the importance of physical activity and a healthy lifestyle. To promote the health and wellbeing of children by making healthy eating and active play a regular part of every child’s day.’

The Kindergarten’s Nutrition and Healthy Eating and Active Play Policy clearly states that the early childhood years are a critical period for the development of healthy food and physical habits which will encourage a healthy lifestyle throughout their lives.

The staff ensure this by:

- Encouraging children to taste/try all foods, not forcing children to eat.
- Discussing nutrition and food in a positive way.
- Planning meal times for children so they are relaxed.
- Encouraging conversation between children.
- Positive role modelling from staff, parents and volunteers by eating with children.
- Respecting individual children’s likes and dislikes.
- Not using food as a reward or for punishment or to provide comfort.

Nude lunchboxes, as pictured below, show how we can minimise use of cling wrap, helping children to learn about keeping us environmentally friendly.



## What does your child need to bring to Kindergarten?



Name all clothing and check size before the start of every term.